

FOR SALE OR LEASE
2725 WEST CALIFORNIA AVENUE, OKLAHOMA CITY, OK 73107



HORIZON
COMMERCIAL REAL ESTATE

Lacey Curry
Broker Associate
405.596.7330

lacey.curry@horizoncreek.com

David Portman, CCIM
Principal
405.850.1107

david.portman@horizoncreek.com



Highlights

- **MEZZANINE FOR ADDITIONAL STORAGE**
- **FENCED AND PAVED OUTSIDE STORAGE**
- **EASY ACCESS TO I-40**
- **CENTRALLY LOCATED JUST WEST OF DOWNTOWN**

Sale Price		\$409,000
Lease Rate		\$8.50/SF
Lease Type		NNN
Total SF		5,262
Office SF		2,383
Office Year Built		1963
Warehouse SF		2,382
Warehouse Year Built		2006
Land Size (AC)		1.30
Number of Buildings		02
Number of Stories		01
Overhead Doors		Three 12' x 14'
Power		240 V, 3 Phase, 400 AMP
Clear Height		18'





HORIZON
COMMERCIAL REAL ESTATE

FOR SALE OR LEASE
2725 W CALIFORNIA AVE, OKC, OK 73107

Lacey Curry
Broker Associate
405.596.7330

lacey.curry@horizoncreek.com

David Portman, CCIM
Principal
405.850.1107

david.portman@horizoncreek.com



HORIZON
COMMERCIAL REAL ESTATE

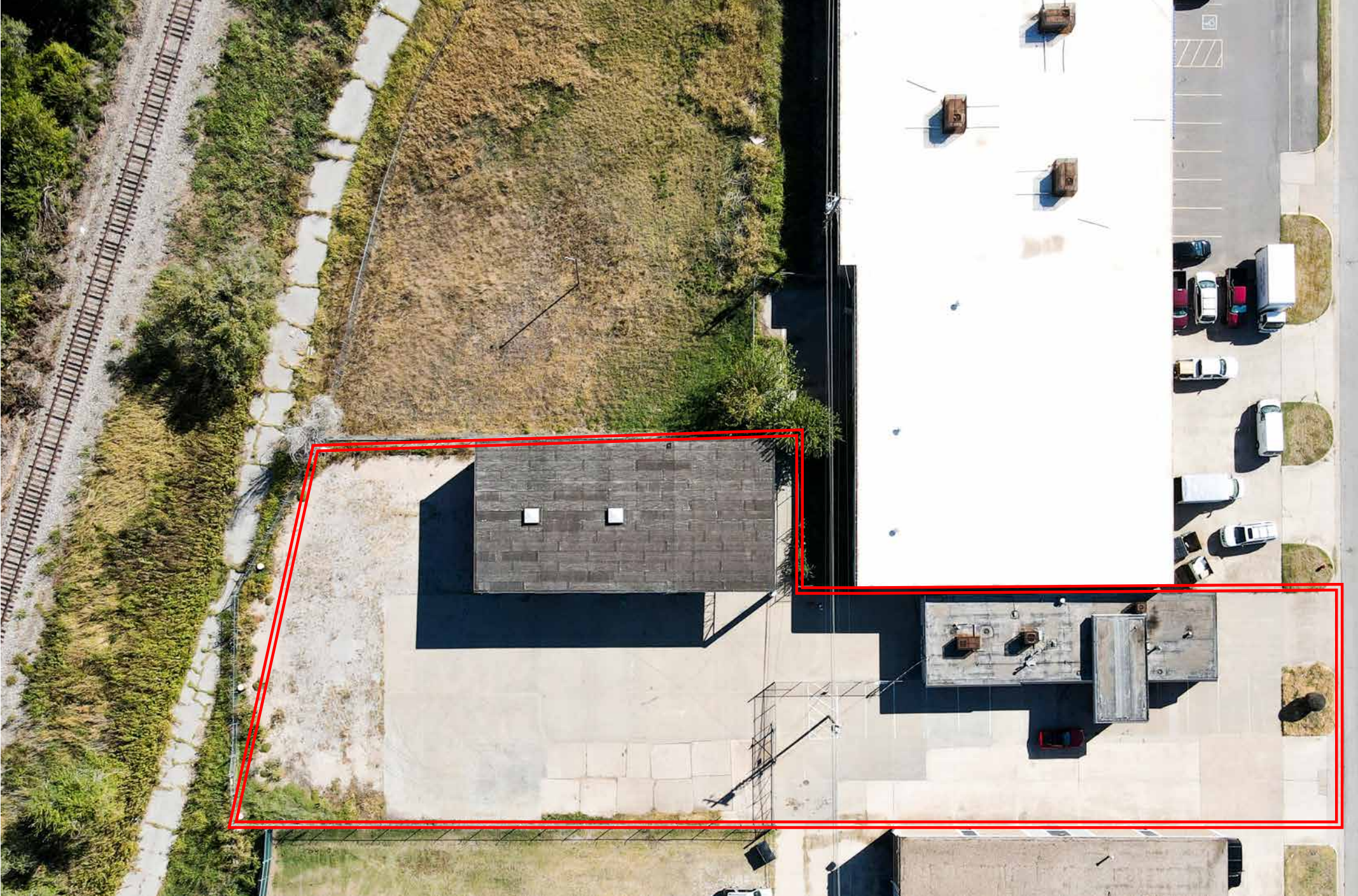
FOR SALE OR LEASE
2725 W CALIFORNIA AVE, OKC, OK 73107

Lacey Curry
Broker Associate
405.596.7330

lacey.curry@horizoncreek.com

David Portman, CCIM
Principal
405.850.1107

david.portman@horizoncreek.com



FOR SALE OR LEASE
2725 W CALIFORNIA AVE, OKC, OK 73107

Lacey Curry
Broker Associate
405.596.7330

lacey.curry@horizoncreek.com

David Portman, CCIM
Principal
405.850.1107

david.portman@horizoncreek.com



HORIZON
COMMERCIAL REAL ESTATE

FOR SALE OR LEASE
2725 W CALIFORNIA AVE, OKC, OK 73107

Lacey Curry
Broker Associate
405.596.7330

lacey.curry@horizoncreek.com

David Portman, CCIM
Principal
405.850.1107

david.portman@horizoncreek.com